

KD-Validated Anti-TIMM50 Rabbit Monoclonal Antibody
Rabbit monoclonal antibody
Catalog # AGI1881**Specification**

KD-Validated Anti-TIMM50 Rabbit Monoclonal Antibody - Product Information

Application	WB, FC, ICC
Primary Accession	Q3ZCQ8
Reactivity	Rat, Human, Mouse
Clonality	Monoclonal
Isotype	Rabbit IgG
Calculated MW	Predicted, 40 kDa; Observed, 36 kDa kDa
Gene Name	TIMM50
Aliases	TIMM50; Translocase Of Inner Mitochondrial Membrane 50; TIM50; TIM50L; Mitochondrial Import Inner Membrane Translocase Subunit TIM50; Translocase Of Inner Mitochondrial Membrane 50 Homolog (Yeast); Homolog Of Yeast Tim50; Tim50-Like Protein; MGCA9
Immunogen	A synthesized peptide derived from human TIM50

KD-Validated Anti-TIMM50 Rabbit Monoclonal Antibody - Additional Information

Gene ID	92609
Other Names	
Mitochondrial import inner membrane translocase subunit TIM50, TIMM50, TIM50	

KD-Validated Anti-TIMM50 Rabbit Monoclonal Antibody - Protein Information**Name** TIMM50**Synonyms** TIM50**Function**

Essential component of the TIM23 complex, a complex that mediates the translocation of transit peptide-containing proteins across the mitochondrial inner membrane (PubMed:30190335, PubMed:38828998). Has some phosphatase activity in vitro; however such activity may not be relevant in vivo.

Cellular Location

Mitochondrion inner membrane; Single-pass membrane protein

Tissue Location

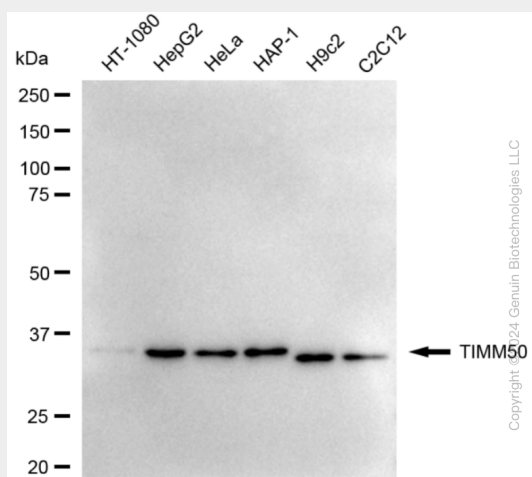
Widely expressed. Expressed at higher level in brain, kidney and liver (at protein level)

KD-Validated Anti-TIMM50 Rabbit Monoclonal Antibody - Protocols

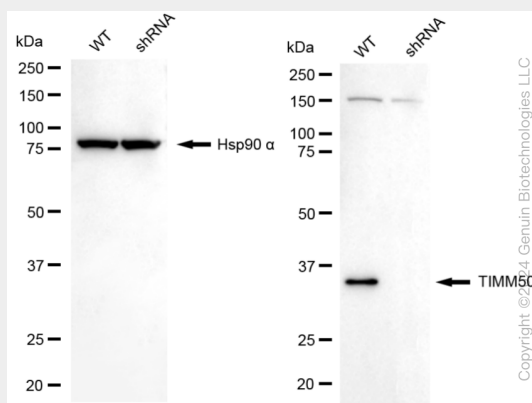
Provided below are standard protocols that you may find useful for product applications.

- [Western Blot](#)
- [Blocking Peptides](#)
- [Dot Blot](#)
- [Immunohistochemistry](#)
- [Immunofluorescence](#)
- [Immunoprecipitation](#)
- [Flow Cytometry](#)
- [Cell Culture](#)

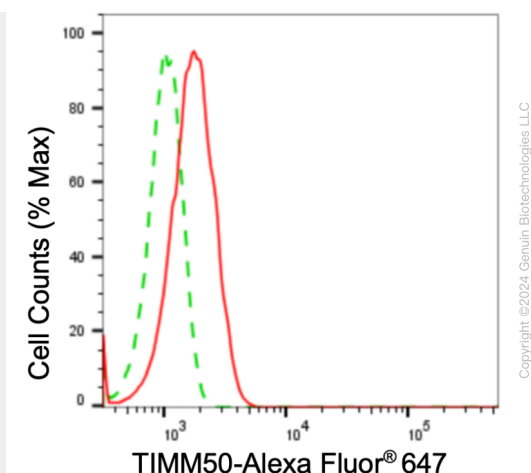
KD-Validated Anti-TIMM50 Rabbit Monoclonal Antibody - Images



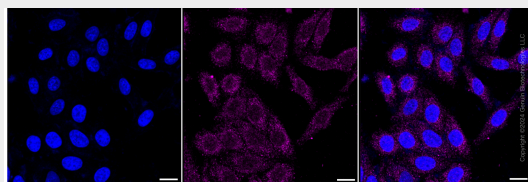
Western blotting analysis using anti-TIMM50 antibody (Cat#AGI1881). Total cell lysates (30 µg) from various cell lines were loaded and separated by SDS-PAGE. The blot was incubated with anti-TIMM50 antibody (Cat#AGI1881, 1:5,000) and HRP-conjugated goat anti-rabbit secondary antibody respectively.



Western blotting analysis using anti-TIMM50 antibody (Cat#AGI1881). TIMM50 expression in wild-type (WT) and TIMM50 shRNA knockdown (KD) HeLa cells with 20 µg of total cell lysates. Hsp90 α serves as a loading control. The blot was incubated with anti-TIMM50 antibody (Cat#AGI1881, 1:5,000) and HRP-conjugated goat anti-rabbit secondary antibody respectively.



Flow cytometric analysis of TIMM50 expression in HepG2 cells using anti-TIMM50 antibody (Cat#AGI1881, 1:2,000). Green, isotype control; red, TIMM50.



Immunocytochemical staining of HepG2 cells with anti-TIMM50 antibody (Cat#AGI1881, 1:1,000). Nuclei were stained blue with DAPI; TIMM50 was stained magenta with Alexa Fluor® 647. Images were taken using Leica stellaris 5. Protein abundance based on laser Intensity and smart gain: Low. Scale bar: 20 μ m.